



DAVIS HALL NORTH  
REPLACEMENT PROJECT  
CENTER FOR INFORMATION  
TECHNOLOGY RESEARCH IN THE  
INTEREST OF SOCIETY  
CAAN #153 UC PROJECT #1215A

**SMITHGROUP**

architecture engineering interiors planning  
SMITHGROUP, INC.  
225 BUSH STREET  
SAN FRANCISCO, CALIFORNIA 94104  
T 415.227.0100  
F 415.882.7718  
www.smithgroup.com

Forrell/Ebeser, Engineers, Inc.  
165 Pine Street, Suite 600, San Francisco, California 94111  
415.837.8700

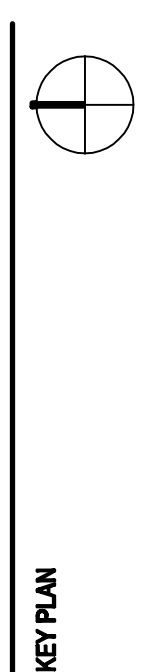
Band, Pao + Athanas Consulting Engineers, LLC  
1155 Market Street, Suite 200, San Francisco, California 94103  
415.882.7718  
213.883.8082

TEECOM Design Group  
TELECOMMUNICATIONS CONSULTING ENGINEERS  
1810 Folsom Street, Suite 401, Oakland, California 94612  
510.337.2800

Holloway Dinwiddie Construction Company  
CM CONTRACTOR  
6901 Redwood Road, Suite 200, San Ramon, California 94583-4219  
925.398.4200

ISSUED FOR	REV	DATE

SCHEMATIC DESIGN 0 12/07/07  
SEALS AND SIGNATURES  
ADMITTED OF NUMBER OF RECORD



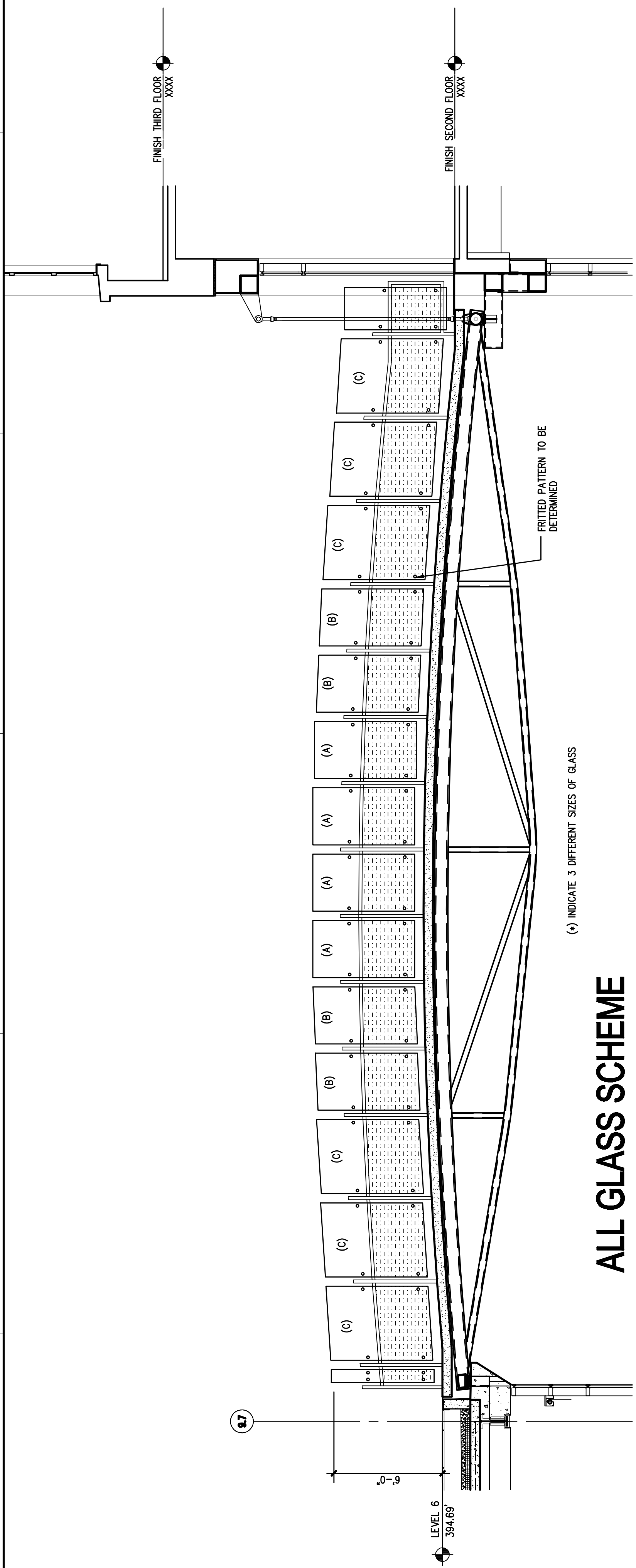
DRAWING TITLE

GUARD RAILING OPTIONS

SCALE 1/4" = 1'-0"

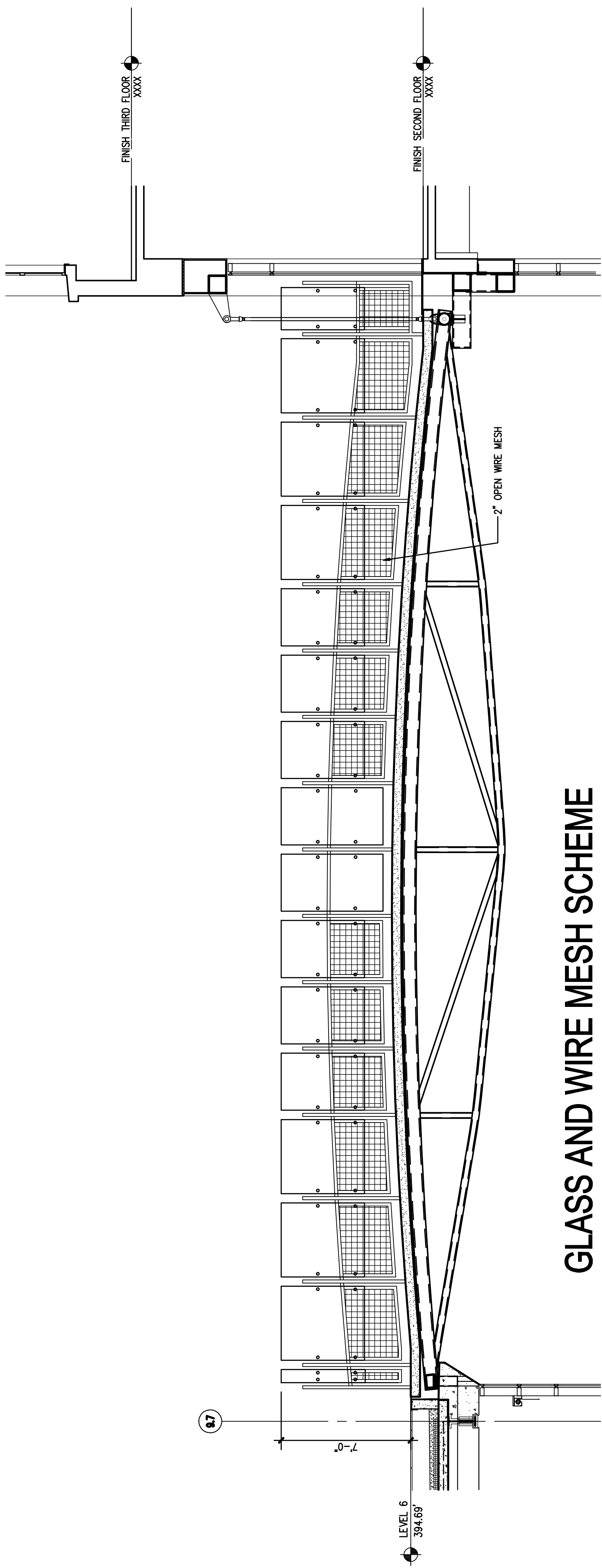
PROJECT NUMBER 38440.001

DRAWING NUMBER A-5



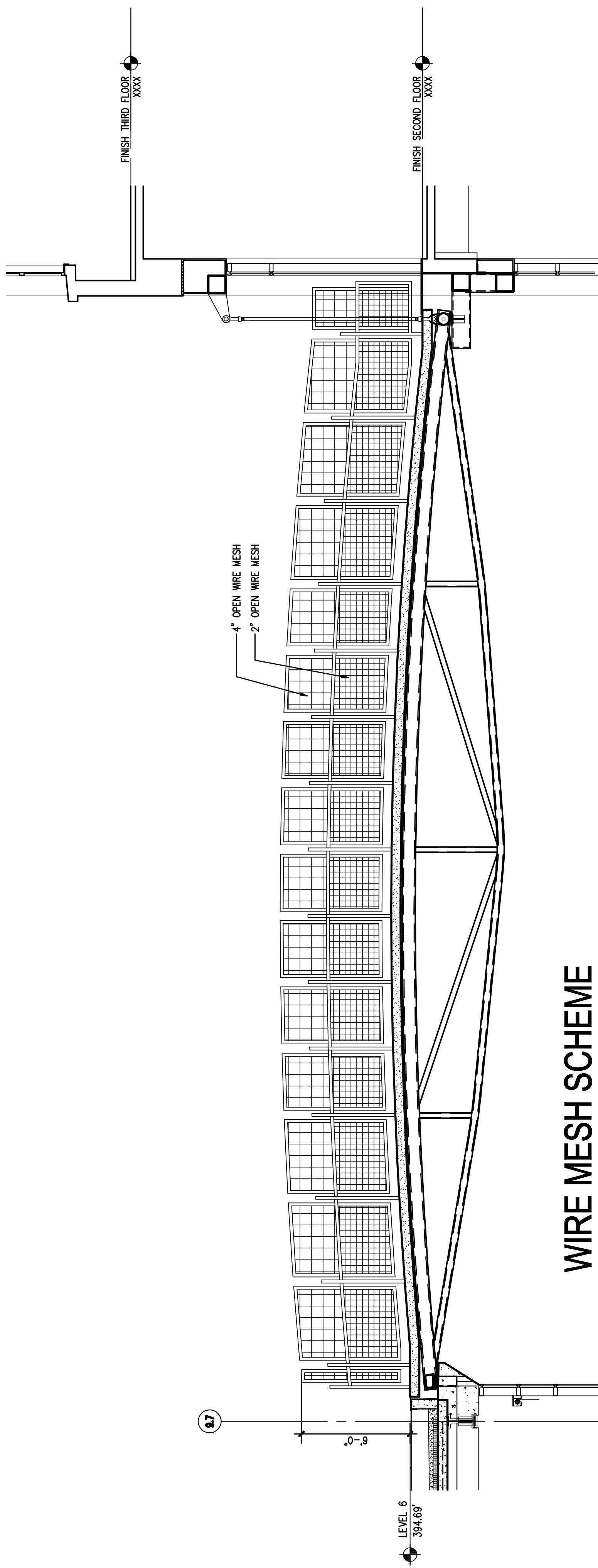
**ALL GLASS SCHEME**

67 BRIDGE OPTION A  
ALL GLASS  
SCALE: 1/4" = 1'-0"



**GLASS AND WIRE MESH SCHEME**

70 BRIDGE OPTION B  
GLASS TOP, MESH BOTTOM  
SCALE: 1/4" = 1'-0"



**WIRE MESH SCHEME**

72 BRIDGE OPTION C  
GLASS AT CENTER, MESH AT OTHERS  
SCALE: 1/4" = 1'-0"